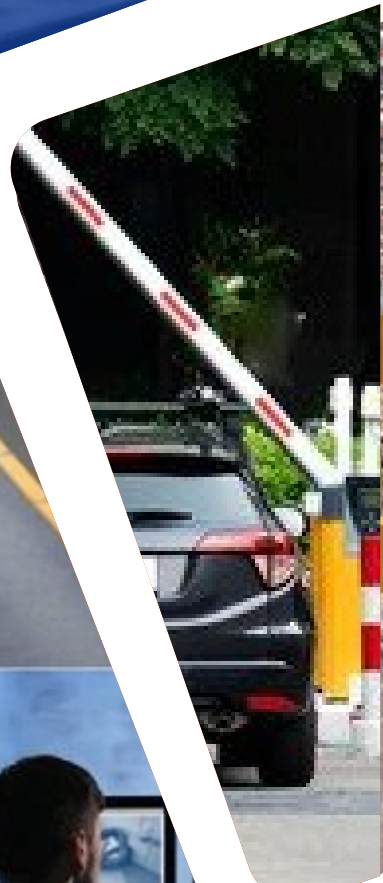




**Sunshine**

IT Infra Services Pvt. Ltd.

# Sunshine IT Infra Services Pvt Ltd



**Regd Office:**  
**Sunshine IT Infra Services Pvt. Ltd.**

402 Saraswati House, 4th Floor,  
Nehru Place:-110019

Tel: +91 9899099639, 01141329639

Web: [www.sunshinetechnology.in](http://www.sunshinetechnology.in)



Contact Sales  
[sales@sunshinetechnology.in](mailto:sales@sunshinetechnology.in)



Technical Support:  
+91 8527649500  
[support@sunshinetechnology.in](mailto:support@sunshinetechnology.in)

LET'S CONNECT ON SOCIAL MEDIA

PRODUCT LAUNCH, NEW FEATURES, EVENTS



## Introduction

Sunshine IT Infra Pvt. Ltd. is a leading provider of innovative pedestrian access control solutions. With a strong focus on advanced technology and user-centric designs, Sunshine IT Infra has established itself as a trusted name in the industry.

At Sunshine IT Infra, we understand the critical importance of pedestrian access control in various environments, including commercial buildings, educational institutions, transportation hubs, and public spaces. Our goal is to enhance security, streamline traffic flow, and ensure seamless access management for pedestrians.

With a team of skilled engineers, designers, and technicians, Sunshine IT Infra is committed to delivering state-of-the-art solutions that address the unique needs of our clients. We believe in providing customized access control systems that combine cutting-edge technology with robust security features.



## Quality Objective

To establish Sunshine IT Infra as a leading provider of innovative and reliable IT infrastructure solutions, consistently exceeding client expectations and setting industry benchmarks for quality, efficiency, and customer satisfaction.

### Key Elements:

**Unparalleled Service Excellence:** Strive to deliver exceptional service experiences to our clients by understanding their unique requirements, providing timely and effective solutions, and maintaining a strong focus on customer satisfaction.

**Cutting-edge Technological Expertise:** Continuously enhance our technical capabilities and stay at the forefront of emerging technologies to offer state-of-the-art IT infrastructure solutions that enable our clients to achieve their business goals more effectively.

**Reliability and Scalability:** Build robust and scalable IT infrastructures that ensure high availability, optimal performance, and seamless scalability, allowing our clients to adapt to changing business needs and stay competitive in the dynamic market.

**Proactive Problem Resolution:** Proactively identify and resolve potential issues in IT infrastructure systems, leveraging advanced monitoring and analysis tools, to minimize downtime, maximize system uptime, and maintain uninterrupted business operations for our clients.

**Collaborative Partnerships:** Foster strong collaborative partnerships with clients, suppliers, and industry stakeholders to gain a comprehensive understanding of market trends, technological advancements, and client requirements. By actively engaging with our network, we can deliver tailored solutions that align with our clients' strategic objectives.

**Continuous Improvement:** Cultivate a culture of continuous improvement and innovation within the organization, encouraging employees to develop their skills, stay updated with industry best practices, and explore new approaches to enhance our services and offerings.

**Information Security:** Uphold the highest standards of information security and data privacy, implementing robust security measures, conducting regular audits, and complying with relevant regulatory frameworks. By prioritizing data protection, we ensure the confidentiality, integrity, and availability of our clients' sensitive information.

**Sustainability and Green Initiatives:** Embrace sustainable practices and green initiatives in our operations, striving to reduce our carbon footprint, optimize energy consumption, and promote eco-friendly solutions. By incorporating environmentally conscious strategies, we contribute to a more sustainable future for our clients and the planet.



## Our Pedestrian Access Control Solution

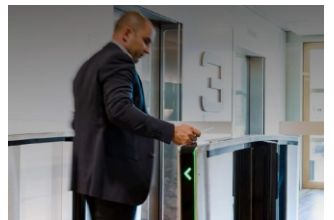
**Boom Barrier:** Sunshine IT Infra Services PVT. Ltd. offers an exceptional solution for controlled access and efficient traffic management with cutting-edge boom barrier systems. These boom barriers provided by Sunshine IT Infra Services are designed to enhance security and streamline the flow of vehicles in various settings, including parking lots, residential complexes, commercial buildings, and toll booths.



**Turnstile:** Sunshine IT Infra offers a wide range of turnstile solutions designed to efficiently manage pedestrian traffic. Our turnstiles utilize advanced sensors and intelligent algorithms to detect and authenticate individuals, ensuring only authorized personnel can gain access. These turnstiles can be seamlessly integrated with various access control mechanisms such as RFID cards, biometric scanners, or facial recognition systems.



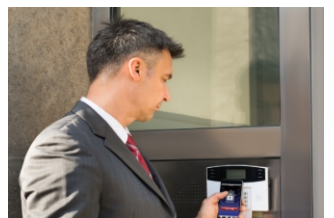
**Speed Gates:** For environments requiring high-speed and high-security access control, Sunshine IT Infra provides state-of-the-art speed gates. These sleek and modern gates offer rapid passage for authorized individuals while preventing unauthorized access. Equipped with advanced sensors and anti-tailgating technology, our speed gates provide an extra layer of security without compromising on user convenience.



**Security Portals:** Our security portals are designed to provide maximum security without impeding the flow of pedestrian traffic. These intelligent portals combine multiple access control technologies such as biometrics, RFID, and metal detection to create a comprehensive security solution. They are ideal for high-security areas where stringent access control measures are required, such as airports, government buildings, and critical infrastructure facilities.



**Mobile Access Solution:** the growing trend of mobile technology, Sunshine IT Infra offers mobile-based access control solutions. Through our innovative mobile apps, authorized individuals can use their smartphones as digital credentials to gain access to secured areas. This eliminates the need for physical cards or tokens, providing a more convenient and flexible access control experience.



**Data Analytics & Integration:** Sunshine IT Infra understands the importance of data-driven decision-making. Our access control systems are equipped with advanced analytics capabilities, allowing businesses to gain valuable insights into pedestrian flow patterns, peak hours, and security incidents. Furthermore, our solutions seamlessly integrate with other security systems, such as video surveillance and intrusion detection, to provide a comprehensive security infrastructure.



## ANPR Technology (Automatic Number Plate Recognition)

The Automatic Number Plate Recognition (ANPR) system is a technology used for automatic detection, reading, and interpretation of license plate information from vehicles. ANPR systems employ a combination of hardware, software, and image processing techniques to capture images of license plates, extract the alphanumeric characters, and analyze the data for various applications. This technology has widespread use in law enforcement, traffic management, toll collection, parking management, and security systems.

### Components of an ANPR System:

#### Camera:



#### Illuminating System:



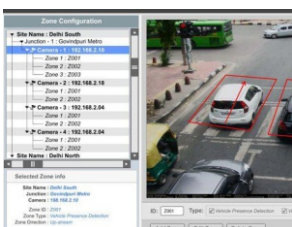
#### Image Processing Software:



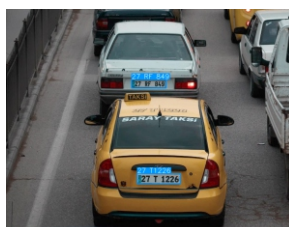
#### OCR Engine:



#### Database & Pattern Recognition:



#### Alerting & Integration:



### Benefits and Applications:

- LAW Enforcement
- Parking Management
- Traffic Management
- Security Systems
- Toll Collection

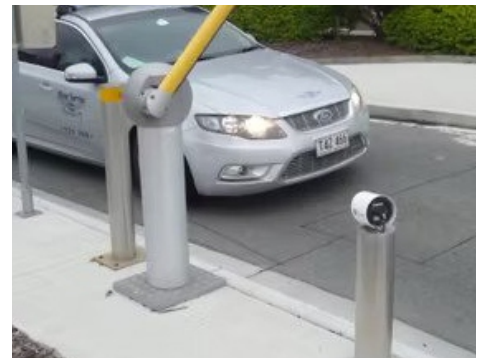
## ANPR (Automatic Number Plate Recognition) System and its Superiority over RFID Technology

**Accuracy and Reliability:** ANPR systems excel in accuracy and reliability due to their ability to capture and analyze detailed information from license plates. The OCR algorithms employed in ANPR systems are designed to handle various font styles, plate variations, and lighting conditions, ensuring high recognition rates. On the other hand, RFID technology relies on radio frequency signals emitted by passive or active tags attached to vehicles. However, RFID tags may suffer from interference, signal attenuation, or collisions when multiple tags are present in the vicinity, leading to compromised accuracy and reliability.

**Non Intrusiveness:** ANPR systems are non-intrusive, as they capture license plate information from a distance using cameras and image processing techniques. This aspect is particularly advantageous in applications such as toll collection, where the system can identify and charge vehicles without requiring them to stop or interact with any physical infrastructure. RFID technology, on the other hand, necessitates the installation of specialized readers and tags, which can be intrusive and add to the infrastructure cost. Additionally, RFID tags must be physically attached to each vehicle, which can be impractical in certain scenarios, such as monitoring transient or rental vehicles.

**Flexibility and Adaptability:** ANPR systems offer a high degree of flexibility and adaptability. The software algorithms can be optimized and updated to accommodate changes in license plate formats, regulations, and localization requirements. ANPR systems can be configured to recognize plates from various jurisdictions, making them suitable for cross-border applications. Conversely, RFID technology is limited in terms of flexibility, as it relies on specific tag formats and protocols. The deployment of RFID systems across different regions or countries may require modifications or replacement of tags and readers to align with local standards, resulting in increased costs and complexity.

**Integration with Existing Infrastructure:** ANPR systems can be seamlessly integrated with existing surveillance networks, traffic management systems, and databases. They can communicate with other systems to cross-reference license plate information with databases of stolen vehicles, parking permits, or wanted individuals. This integration allows for real-time alerts, automated enforcement actions, and comprehensive data analysis. On the other hand, RFID technology often requires the installation of a dedicated infrastructure with readers and antennas, which may not be easily integrated into existing systems. Achieving interoperability with other systems and databases becomes more challenging, limiting the scope of its applications.









**Sunshine**

IT Infra Services Pvt. Ltd.



**Regd Office:**  
**Sunshine IT Infra Services Pvt. Ltd.**  
402 Saraswati House, 4th Floor,  
Nehru Place:-110019  
Tel:+91 9899099639, 01141329639  
Web: [www.sunshinetechnology.in](http://www.sunshinetechnology.in)

 **Contact Sales**  
[sales@sunshinetechnology.in](mailto:sales@sunshinetechnology.in)  
 **Technical Support:**  
**+91 8527649500**  
[support@sunshinetechnology.in](mailto:support@sunshinetechnology.in)

**LET'S CONNECT ON SOCIAL MEDIA** **PRODUCT LAUNCH, NEW FEATURES, EVENTS**

